

Mitchell1 Manager/ManagerPlus

Nexpart Electronic Parts Ordering Installation

Requirements

The computer system requirements for the Mitchell 1 Manager System and Nexpart are the same as when using any other electronic catalog. Ideally the shop should be using Windows 2000 or XP and the network must be connected to the Internet. The Internet connection should be a broadband connection.

Medium

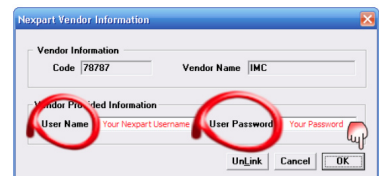
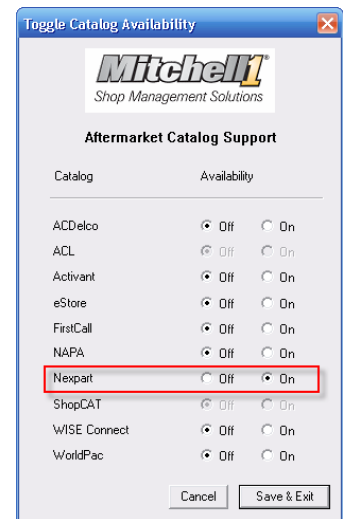
The Nexpart catalog is entirely Web based and requires no installation; the catalog provides connectivity to Nexpart stores throughout the United States and Canada.

Functionality

Provides fast part lookups using category/subcategory, job lists, part number, description look-up, and keyword searches. The NAPA catalog provides real-time quantity and price checks at the store and distribution center quantity checks.

Enabling

1. From the home screen select **Setup / Special Maintenance > Toggle Catalog Availability**
 - a. Set the radio button to **'On'** for Nexpart
 - b. Click on **Save & Exit**
2. From the top menu items select **Setup / Vendor Setup**
 - a. Create or Edit an existing Vendor Record, with the vendor edit screen open click on the **Setup Link** button.
 - b. With the Link Type Selection window open, select **Setup Nexpart Link** and click **OK**
 - c. In the Nexpart Vendor Information screen, enter the same User Name and User Password you would when accessing <http://nexpart.com>.
3. Open any Estimate, RO or Invoice and click on the Nexpart button to use the integrated catalog.



Web Site: Mitchell1.com

