

Mitchell1® Integrator

Automatic Database Synchronization

Transfer activity from your Shop Management system directly to QuickBooks using the newest version of Mitchell 1 Integrator. Mitchell 1 Integrator saves you time, improves efficiency, and eliminates errors by accurately tracking posted invoices, purchase orders, payments, late fees, and more. The synchronization between databases reduces data entry costs and errors by eliminating the need to manually enter data twice.

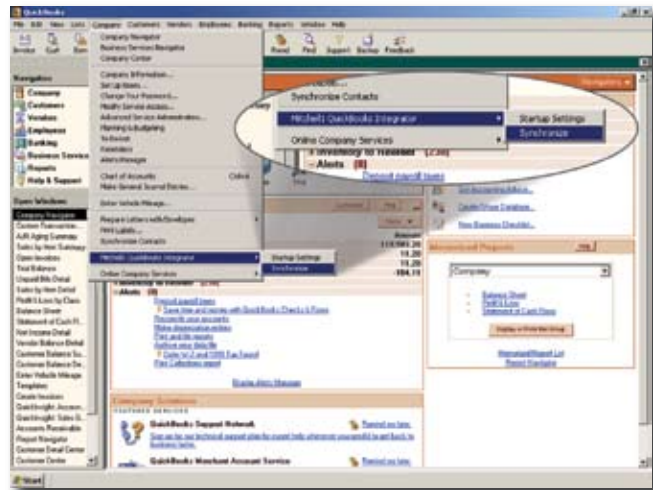
Integrating with QuickBooks

Mitchell 1 Integrator version 1.1 provides integration between Mitchell 1 Manager/ManagerPlus 5.9 and Intuit's QuickBooks Pro 2007. Mitchell 1 Integrator version 1.1 is compatible with Microsoft's Windows 2000 and XP operating systems.

Easy Synchronization

Prior to the initial synchronization, Integrator version 1.1 ensures that the required QuickBooks features have been enabled to allow for proper operation between your Shop Management system and QuickBooks. This enhancement simplifies the set-up process.

Integrator version 1.1 provides seamless naming conventions for customer accounts with Preferred Default Naming. Customer records in your Shop Management system that contain a company name will be used and displayed in the QuickBooks customer name field. If no company name exists, QuickBooks will use the First & Last Name stored in your Shop Management system.



One-Click synchronization transfers activity.

A built-in safeguard prevents synchronizing your Shop Management system data to an invalid QuickBooks file, ensuring that your Shop Management system and QuickBooks remain synchronized without any loss of data or productivity.

Before completing a synchronization, Integrator version 1.1 checks for the existence of required data objects by examining the QuickBooks company names (objects) and determining if data objects have been renamed or deleted. This enhancement allows you the opportunity to exit and correct data before proceeding, eliminating any loss of data resulting from the name of a synchronized account having been inadvertently changed.

Phone: 888-724-6742 x6313
Web Site: Mitchell1.com/qbi

Mitchell1®
Shop Management Solutions

Mitchell1® Integrator

Transfer the Data You Need

All important shop information is transferred automatically: tax rates, material rates, labor rates, vendor information, employee lists, inventory items*, customer records, invoices, balances, deposits, payments, refunds, late fees and purchase orders*.

Easy Data Recovery

Version 1.1 provides a process to backup a copy of the transaction file each time the synchronization process is run, allowing for easy data recovery.

Item	Description	Qty	Rate	Customer	Amount	Rcv'd	Cl'd
	Reference to Shop Management PO# 1974						
	Vendor Invoice no:						
12480 #1-29	Fan Belt	1	7.00		7.00	1	✓
12545 #1-43	Fan Belt	1	9.70		9.70	1	✓
12465 #1-53	Fan Belt	1	12.50		12.50	1	✓
CSC1006 #1-91	Cooling System Cleaner	3	5.95		17.85	3	✓
th195 #1-93	Thermostat - 195 degree	2	4.69		9.38	2	✓
7301 #1-100	Radiator Hose	1	6.00		6.00	1	✓
7295 #1-109	Radiator Hose	2	8.90		17.80	2	✓
FD04 #1-197	Ignition Module	1	57.31		57.31	1	✓
afrc12 #1-225	Anti-Freeze 1/2 Gal	1	5.95		5.95	1	✓
wp2568r #1-241	Water Pump - Rebuilt	1	45.00		45.00	1	✓
cts234 #1-242	Coolant Sensor	4	14.56		58.24	4	✓
8793245 #1-243	Fan Belt	5	13.27		66.35	5	✓
gf1 #1-257	Fuel Filter	1	2.37		2.37	1	✓
VWVCL #1-258	Valve Cover Gasket Set - VW	1	5.00		5.00	1	✓
bar1 #1-273	Additive - Cooling Sys Lubricant/Conditioner	1	6.10		6.10	1	✓
af2303 #1-311	Air Filter	1	9.87		9.87	1	✓
VWBTUK #1-359	VW Bug Tune Kit - Pts, Cond, Cap, Rotor	1	39.95		39.95	1	✓
	Total				407.32		

Example of purchase order transferred from ManagerPlus.

System Requirements:

The application requires Manager or ManagerPlus 5.9, QuickBooks Pro 2007 (US version), Windows 2000 or XP, 256 MB of system memory and an Internet connection.

*Available only when used with Mitchell 1 ManagerPlus.

⚠ Mitchell 1 Integrator is designed exclusively to synchronize your Shop Management system with a new QuickBooks Company File. Any attempt to synchronize with a pre-existing Company File will likely create undesired results. Technical support cannot be provided for synchronizing with a pre-existing Company File. Note: Users upgrading from Integrator 1.0 are not required to create a new Company File.

Phone: 888-724-6742 x6313
Web Site: Mitchell1.com/qbi

Mitchell1®
Shop Management Solutions

QBIRSO607