



Mitchell1

OnDemand5.comTM

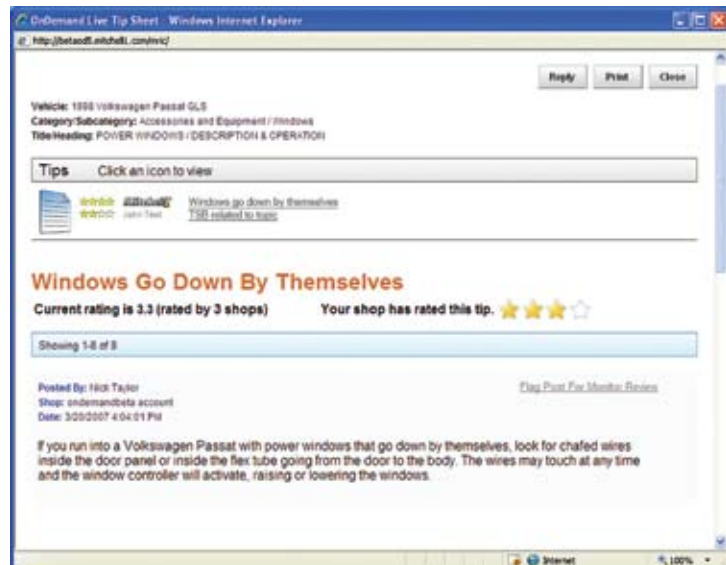
Mitchell 1 OnDemand5.com is the end product of repair information that has been collected across the past eight decades and presented to our customers in a consistent, easy-to-use format. OnDemand5.com includes Diagnostics, Repair Information, TSBs, Recalls, Maintenance Requirements, Parts Prices, Labor Times, Vintage Information, and Fluid Types and Volumes that have been reproduced directly from the Original Equipment Manufacturers (OEM) published works. All this information is then combined to create the aftermarket industry’s best Wiring Diagrams, Users Tips, and Shortcuts that make up Mitchell 1’s OnDemand5.com.

OnDemand5.com Features

Google™ Search – New to Mitchell 1’s OnDemand5.com, Google search finds what you’re looking for faster and easier than ever before. Unlike other products, OnDemand5.com Google search goes beyond article titles to find answers within entire documents - even TSBs and User Tips. Core benefits for adding the most effective and trusted search tool/engine to OnDemand5.com are:

- The Google brand, the most trusted on the planet with over 2,700,000,000 searches a month
- Intuitive, Familiar and Quick
- Complete, able to find return results from the text within the body of the article, not just titles/headers
- Superior relevancy returns

(R,T)

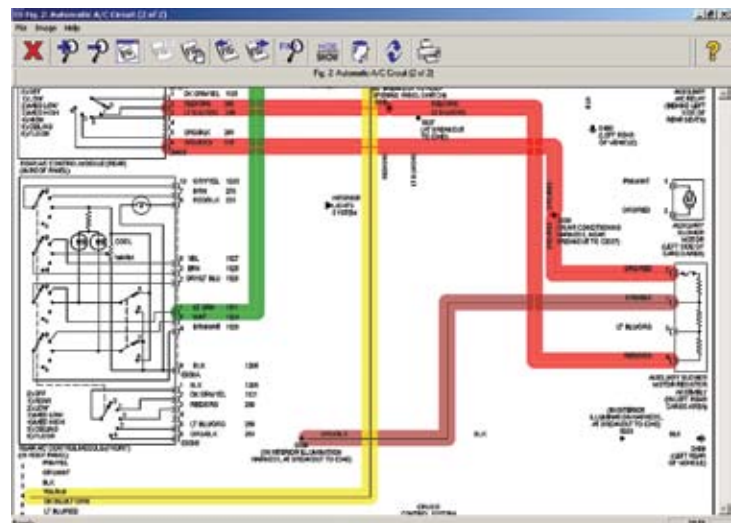


Color Wiring Diagrams – Introduced to the automotive industry by Mitchell 1, OnDemand5 is the only system that includes full-color diagrams for every vehicle back to 1985. With SVG technology, the wiring diagrams retain their clarity when zooming and allow you to search for information easier by finding and highlighting the text of the repair articles based on specific keywords within the diagram. (D,R,T)

OnDemand Live™ –Integrating Mitchell 1’s classic OEM information in context with real world information. OnDemand Live allows technicians to share and benefit from their collective experience increasing productivity and expertise by:

- Helping others by giving information back to the community.
- Avoiding costly mistakes that lead to lost time and money.
- Saving time with procedure shortcuts provided by other technicians.

(R,T)

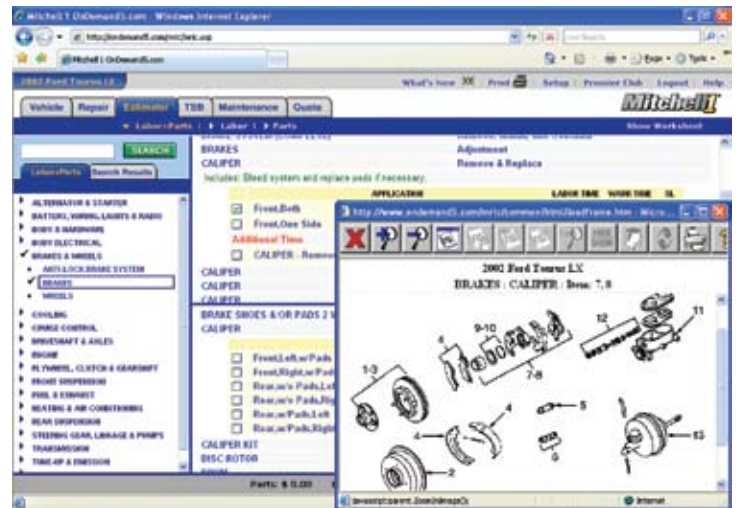


Technical Service Bulletins (TSBs) – Every month the Mitchell 1 editorial team is working behind the scenes to add hundreds of TSBs and Recalls to OnDemand5.com. Use the time-saving Search function to quickly find a relevant TSB or use the Filter tool to narrow your search. (D,R,T)

Vintage Information – As a Mitchell 1 OnDemand5.com subscriber you will have instant access to vintage vehicle information as far back as 1960. Now, engine mechanical articles, engine performance articles, and wiring diagrams are available realtime. (D,R,T)

Oil Circuit Diagrams –Providing consistency, clarity, and an easy-to-read format, Mitchell 1’s full-color oil circuit transmission diagrams have been taken from original OE information making troubleshooting and testing faster and easier than ever. (D,R,T)

OEM Part Numbers & Prices and Labor Times – Mitchell 1 OnDemand5.com can help you build accurate estimates easily by giving you access to the most comprehensive parts and labor database in the industry including OEM Part Numbers & Prices; Accurate Labor Times for 1974-Current Model Year Domestic & Import Vehicle Models and OEM Parts Illustrations. OEM part numbers are included with detailed illustrations and manufacturer suggested retail prices (MSRP). (E)



OEM Scheduled Maintenance Services – OEM-specified services and due dates are presented in time and mileage intervals, as well as services based on dashboard indicator lights. For quick reference, the maintenance data includes fluid capacities that are broken out separately. (D,R,T)

OnDemand5.com Benefits

Easy-to-Use – All you have to do is log-in to the OnDemand5.com homepage and you are ready to access your Mitchell 1 Repair and Estimator information. It’s that simple. There are no discs or quarterly updates to install, and no DVDs to manage.

Easy-to-Learn – Because the graphical user interface behaves in the same manner as the existing DVD-based product, the learning curve to find information is minimized.

New Data Content – The Mitchell 1 editorial team adds 100,000 new pages of OE repair content, taken directly from the OE repair manuals, monthly.

Monthly Updates – Labor times, parts information, maintenance schedules, and over 2,000 repair articles are uploaded to the server every month. This is a seamless update that happens behind-the-scenes and requires absolutely no action on your part.

Reliability – With a proven dependability rate of 99.99% availability over the past six years, and 95% speed improvement in terms of product navigation and article downloading, Mitchell 1 OnDemand5.com is the most reliable repair information available to the automotive aftermarket.

OnDemand5.com Coverage

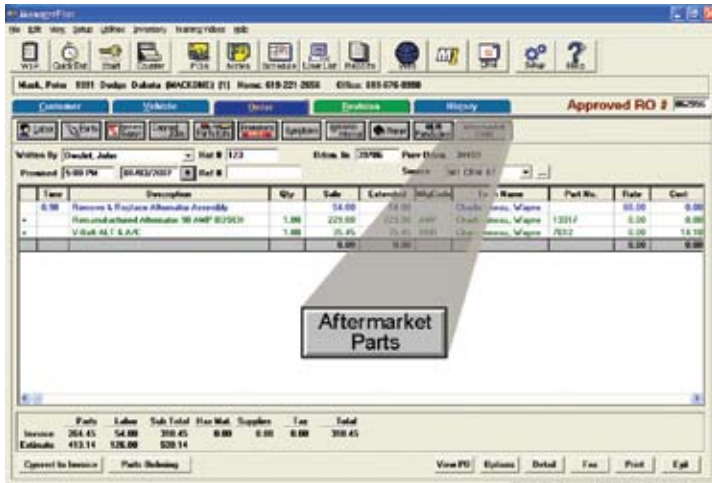
- Accessories
- Air Bags
- Transmission
- Recalls
- Steering
- Cooling
- Diagnostics
- Drive Axles
- AC/Heating
- Brakes
- Alignment
- Suspension
- TSBs
- Maintenance
- Electrical
- Emissions
- Clutches
- Fluid Specs

Legend: D-Available in Desktop R-Available as Repair Only T-Available as Transmission Only E-Available as Estimator Only

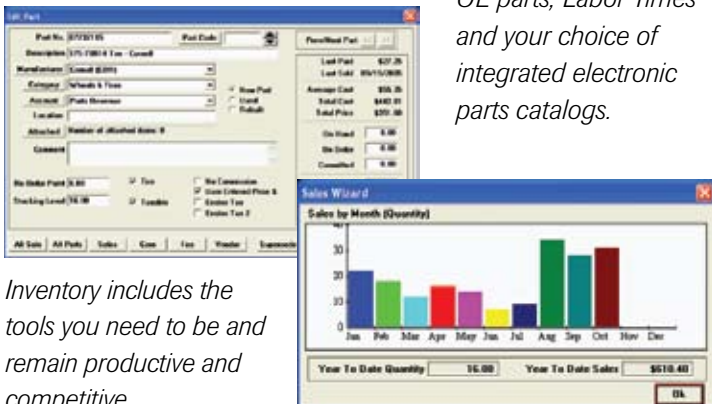
Mitchell1

Manager/ ManagerPlus

Mitchell 1's Manager and ManagerPlus deliver an integrated approach to repair shop productivity and administration, providing shop owners with what they demand from a great shop management program: an increase in profits. And, with electronic parts ordering using leading aftermarket catalogs, your shop can be even more efficient. Going a step beyond, ManagerPlus provides all the functionality of Manager, "plus" parts inventory and purchase-order control.

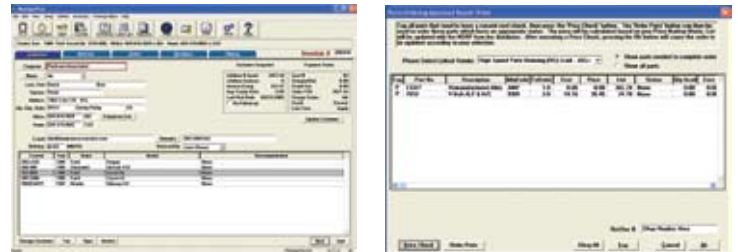


On the order screen, vehicle recommendations, revisions and history are always visible. You have full access to Labor, Parts, Notes, Sublet, Promotions/Tire Packages, Symptom Wizard, Integrated Maintenance Schedules, Repair and TSB information, OE parts, Labor Times and your choice of integrated electronic parts catalogs.



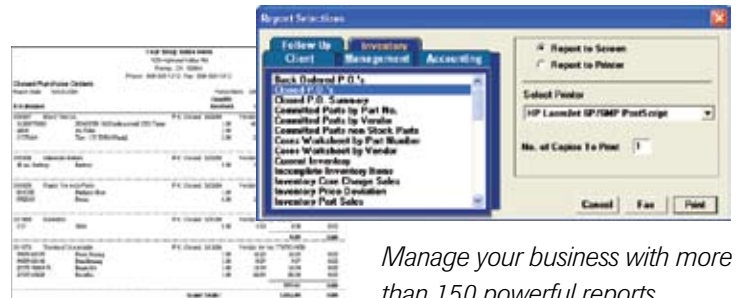
Inventory includes the tools you need to be and remain productive and competitive.

Manager and ManagerPlus now include Mitchell 1's DataProtection which significantly reduces disaster recovery costs for your business with an immediate return-on-investment. A built in disaster recovery solution stores your data in a secure location that is updated daily and includes Maximum Four Hour Business Day Recovery Response.



The customer screen displays detailed information including e-mail address, birthday, and the new Customer Loyalty Snapshot. Service writers can find customers by name, company, phone, VIN, license and more.

Teaming up with industry leaders enables easy price checks and parts ordering. The catalog and vendor you use are your choice.



Manage your business with more than 150 powerful reports.

OnDemand5.com Minimum System Requirements

Microsoft® Vista, Windows XP, Windows 2000 SP2, Windows NT 4.0 SP6, Windows ME, Windows 98 SE Microsoft Internet Explorer 6 • Pentium processor or higher 128 MB of RAM (256 MB recommended) • 15" monitor capable of SVGA (800 x 600) or higher resolution with 256 colors (1024 x 768 recommended) • Inkjet or Laser Printer • High-speed connection (DSL, Cable, or T1)

To Order Call: **888.724.6742 ext.6313**
Locate Your Independent Sales Rep at:
Mitchell1.com

Mitchell1[®]
Automotive Repair Solutions